



# Trust Technology Corporation

(E-mail) [business@trust-t.com](mailto:business@trust-t.com), (URL) <http://www.trust-t.com/>, (TEL) +81-3-3344-5540

TTC ID  
 Maker Advantest  
 Model T3347A  
 Description Tester  
 Vintage Inq.  
 QTY 1

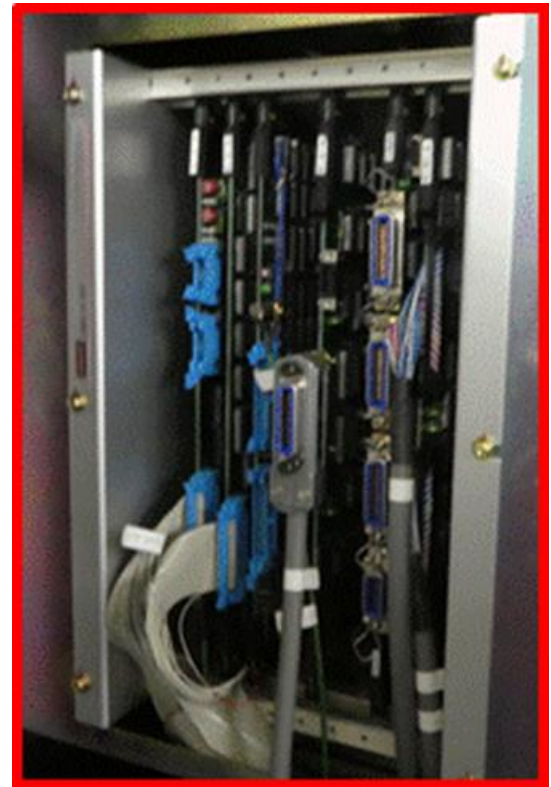
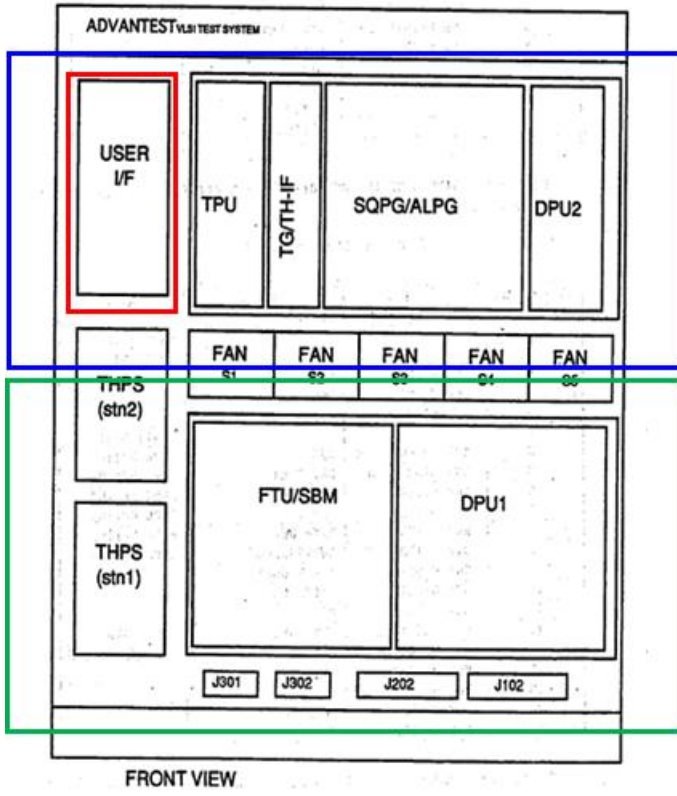
[ NOTES ]

There are more tools listed on the following URL.  
 We hope you will also view it.  
 (Used Tools Information)

<http://www.trust-t.com/tcen/equipment/>



Specification								
Pin数 (/Stn)	Stn	Freq.	デバイス電源	UDC	Multi DC	同測数	PG容量	その他Option
256	1	40MHz	4	2ch	16ch	4	1M	60VPPS/ALPG



SYSTEM CONFIGURATION GENERATE

Configuration of test station

How many test station <1 or 2 & CR> ? 1 .....> **1**

Test station 1 is 256HV2

Station1 reverse flow type <Y or N & CR> ? no .....> no

What number of pin exist in station 1 .....> **1-256**

pin no. (ex:1-256) ? .....> 1-256

SELECT PPS/MDC/UDC

System : 4PPS (1) or 8PPS (2)

Select PPS (see above) <0-2 & CR> ? 1 .....> **1**

Station 1 : 8MDCs (1) or 16MDCs (2) or 24MDCs (3) or 32MDCs (4)

Select MDC (see above) <1-4 & CR> ? 2 .....> **2**

Station 1 : 1UDC (1) or 2UDCs (2) or 4UDCs (4)

Select UDC (see above) <0-4 & CR> ? 2 .....> **2**

60V PPS/UDC option exist <Y OR N & CR> ? yes .....> **yes**

SELECT DMM

R6871E (1) or R6581T (2)

Select DMM (see above) <1-2 & CR> ? 1 .....> 1

GPIB ADDRESS #210

BIT/AD option exist <Y or N & CR> ? no .....> no

ADC test option exist <Y or N & CR> ? no .....> no

HV2-HSCLK option exist <Y or N & CR> ? no .....> no

Select option CLK

64TE CLK option exist <Y or N & CR> ? yes .....> yes

Select STE size

STE capacity 256KW(1) 1MW(2) 2MW(3)

Select STE size (see above) <1-3 & CR> ? 2 .....> **2**

SBM option exist <Y or N & CR> ? yes .....> yes

How many SBM memory boards <1-8 & CR> ? 2 .....> 2

ALPG option exist <Y or N & CR> ? yes .....> **yes**

END SAVE